



Eaton heavy-duty SmartRack enclosures

Accommodate deep, heavy servers for AI applications

The growth of generative artificial intelligence (AI) is increasing computing demand and requiring deeper, heavier servers. Eaton heavy-duty SmartRack® enclosures support up to 5000 pounds of IT equipment to accommodate the extra weight of AI servers along with other critical devices.

Available with multiple width and depth options, including extra-deep models with 54 inches of usable depth, the enclosures help future-proof installations as computing needs grow. Combined with Eaton UPS systems and PDUs, heavy-duty SmartRack enclosures are a perfect fit for generative AI applications in enterprise, colocation and hyperscale data centers.

Key features

Organization for critical equipment, including AI servers

Available in 42U, 45U and 48U, these heavy-duty enclosures have deep, extra-deep and wide options.

- Extra-deep enclosures support AI servers that do not fit in standard enclosures.
- Wide enclosures have side channels for accessory mounting, cable routing and airflow.



Heavy-duty construction for higher weight capacity

Designed to be fully populated with heavy servers and other IT equipment, the enclosures have 5000 lb. stationary and 3500 lb. rolling weight capacities.

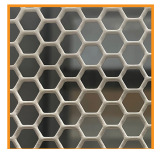
- Frame is 2.5 mm thick steel and has reinforced structural elements, including more welds and supports than standard enclosures, for greater strength.
- Upgraded casters and levelers support the extra weight of AI servers.

Enhanced interior visibility

Enclosures have a white powder-coated finish, making it easier to see IT equipment inside. Better visibility of ports and cables facilitates equipment installation and maintenance and helps reduce connection errors.

Support for efficient cooling

A refreshed door design with a large ventilation pattern supports efficient front-to-rear airflow in hot-aisle/cold-aisle configurations.



Security for PCI DSS compliance

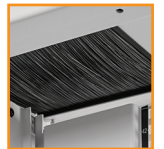
Locking doors and side panels provide physical equipment and media security required for PCI DSS (Payment Card Industry Data Security Standard) compliance.

Easy equipment mounting

Racks have adjustable front and rear equipment-mounting rails with square mounting holes. Toolless 0U mounting rails allow quick installation of compatible PDUs and cable managers.

Convenient cable pass-throughs

The removable top panel has strategically placed pass-throughs with brush strips to better accommodate cables from vertical PDUs and other equipment.



Ready for deployment

Enclosures arrive assembled and ready for rapid deployment.

- Heavy-duty casters enable enclosures to be positioned in the installation area.
- Heavy-duty leveling feet allow enclosures to be stabilized on uneven floors.
- Baying tabs allow enclosures to be combined securely in rows.



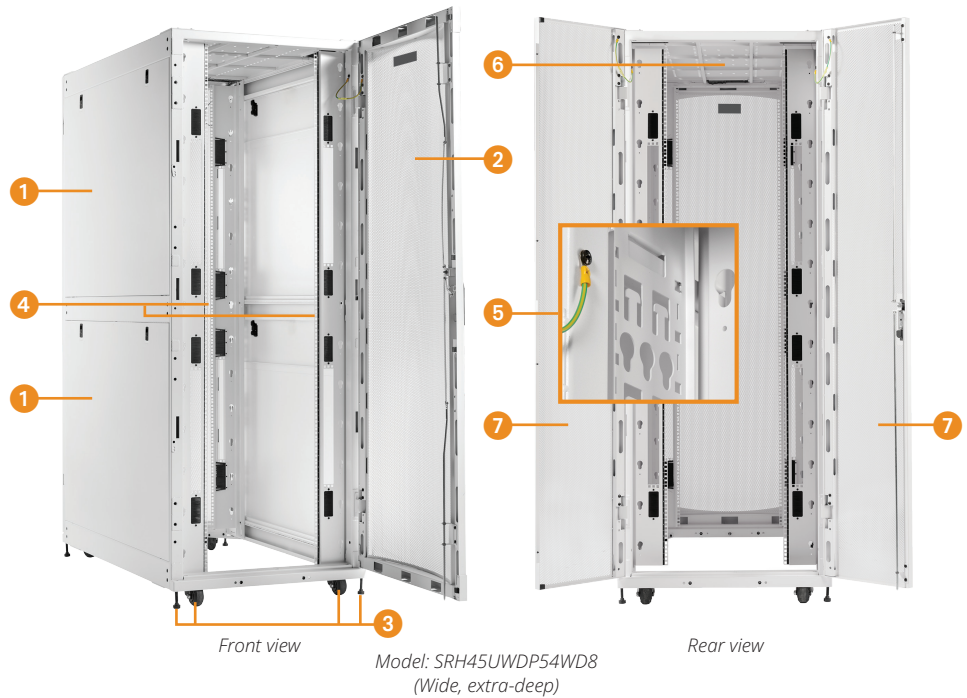
Powering Business Worldwide

Feature focus

- 1 **Side panels** (lockable, removable)
- 2 **Front door** (lockable, removable, reversible) Vented door enables airflow through the rack.
- 3 **Heavy-duty casters and levelers**
- 4 **Adjustable front and rear mounting rails with square holes** Easy-view depth index facilitates adjustment. Rails on wide enclosures have pass-throughs with brush strips and toolless mounting slots.
- 5 **Mounting rails with toolless mounting slots** Mount vertical PDUs and cable managers.
- 6 **Roof panel** (removable) Pass-throughs with brush strips accommodate cables from vertical PDUs and other equipment.
- 7 **Split rear doors** (lockable, removable) Vented doors enable airflow through the rack.

Also included:

- Keys (for doors and side panels)
- Mounting hardware for IT equipment



Specifications

Catalog number	EIA-compliant rack spaces	Maximum device depth	Unit height	Unit width	Unit depth	Unit weight	Stationary weight capacity	Rolling weight capacity
Standard-width, standard-depth enclosures – white								
SRH42UW	42U	41 in. (1041 mm)	79.6 in. (2023 mm)	23.6 in. (600 mm)	44.1 in. (1120 mm)	431 lb. (196 kg)	5000 lb. (2268 kg)	3500 lb. (1588 kg)
SRH45UW	45U		85 in. (2155 mm)			457 lb. (207 kg)		
SRH48UW	48U		90 in. (2290 mm)			512 lb. (232 kg)		
Standard-width, deep enclosures – white								
SRH42UWDP	42U	46 in. (1168 mm)	79.6 in. (2023 mm)	23.6 in. (600 mm)	49.2 in. (1248 mm)	515 lb. (234 kg)	5000 lb. (2268 kg)	3500 lb. (1588 kg)
SRH45UWDP	45U		85 in. (2155 mm)			536 lb. (243 kg)		
SRH48UWDP	48U		90 in. (2290 mm)			557 lb. (253 kg)		
Standard-width, extra-deep enclosures – white								
SRH42UWDP54	42U	54 in. (1372 mm)	79.6 in. (2023 mm)	23.6 in. (600 mm)	58 in. (1471 mm)	540 lb. (245 kg)	5000 lb. (2268 kg)	3500 lb. (1588 kg)
SRH45UWDP54	45U		85 in. (2155 mm)			561 lb. (254.5 kg)		
SRH48UWDP54	48U		90 in. (2290 mm)			582 lb. (264 kg)		
Wide, standard-depth enclosures – white								
SRH42UWWD8	42U	41 in. (1041 mm)	79.6 in. (2023 mm)	31.5 in. (800 mm)	44.1 in. (1120 mm)	515 lb. (234 kg)	5000 lb. (2268 kg)	3500 lb. (1588 kg)
SRH45UWWD8	45U		85 in. (2157 mm)			536 lb. (243 kg)		
SRH48UWWD8	48U		90 in. (2290 mm)			557 lb. (253 kg)		
Wide, deep enclosures – white								
SRH42UWDPWD8	42U	46 in. (1168 mm)	79.6 in. (2023 mm)	31.5 in. (800 mm)	49.2 in. (1248 mm)	540 lb. (245 kg)	5000 lb. (2268 kg)	3500 lb. (1588 kg)
SRH45UWDPWD8	45U		85 in. (2157 mm)			561 lb. (254.5 kg)		
SRH48UWDPWD8	48U		90 in. (2290 mm)			582 lb. (264 kg)		
Wide, extra-deep enclosures – white								
SRH42UWDP54WD8	42U	54 in. (1372 mm)	79.6 in. (2023 mm)	31.5 in. (800 mm)	58 in. (1471 mm)	560 lb. (254 kg)	5000 lb. (2268 kg)	3500 lb. (1588 kg)
SRH45UWDP54WD8	45U		85 in. (2155 mm)			581 lb. (264 kg)		
SRH48UWDP54WD8	48U		90 in. (2290 mm)			602 lb. (273 kg)		
1U blanking panels – white								
SR1UPANEL10W	Set of 10 1U blanking panels (white)							

Due to continuous improvement programs, all specifications are subject to change without notice. Heavy-duty SmartRack enclosures have a five-year limited warranty.

To learn more, visit
Eaton.com/HDRack or contact
 your Eaton sales representative.



Eaton
 1000 Eaton Boulevard
 Cleveland, OH 44122
 United States
 Eaton.com

©2024 Eaton
 All Rights Reserved
 Printed in USA
 BR153203EN / 24-05-265
 October 2024

EATON
 Powering Business Worldwide

Eaton is a registered trademark.
 All other trademarks are property
 of their respective owners.

Follow us on social media to get the
 latest product and support information.

